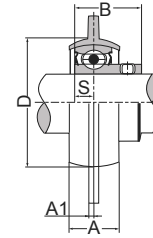
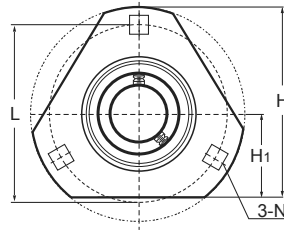
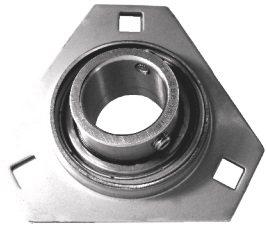


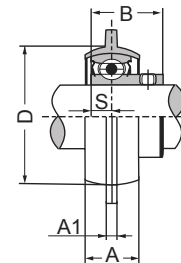
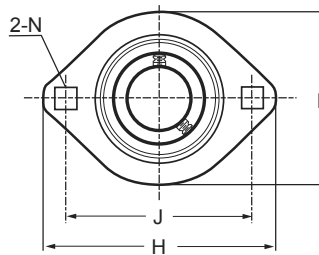
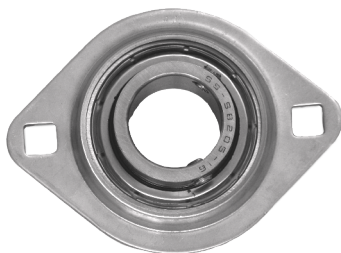
Housing Flange Units - SSBSPFT Series



Unit No.	Shaft Dia. (inch / mm)	Dimensions (inch / mm)									Bolt Size	Bearing No.	Housing No.	Mass	
		d	H	L	H1	A	N	B	A1	S				D min.	kg
SSBSPFT 201 201-8 202 202-10 203	12 mm 1/2 15 mm 5/8 17 mm	2-23/32 69.1	2-1/2 63.5	0.079 2.0	9/16 14.3	9/32 7.1	1-1/8 28.6	0.866 22.0	0.236 6.0	1-15/16 49.2	1/4 M6	SSB 201 20-8 202 202-10 203	PFT 203 SS	2.2	0.5
SSBSPFT 204-12 204	3/4 20 mm	3 76.2	2-13/16 71.4	0.079 2.0	5/8 16.0	11/32 9.0	1-5/16 33.3	0.972 27.4	0.276 7.0	2-3/16 56.0	5/16 M8	SSB 204-12 204	PFT 204 SS	2.2	0.5
SSBSPFT 205-14 205-15 205 205-16	7/8 15/16 25 mm 1	3-1/8 79.4	3 76.2	0.079 2.0	11/16 18.0	11/32 9.0	1-3/8 34.9	1.063 27.0	0.295 7.5	2-3/8 60.0	5/16 M8	SSB 205-14 205-15 205 205-16	PFT 205 SS	3.6	0.8

Other sizes could be available upon request. Minimum quantity may apply.
Please refer to page 52 for setscrew maximum torque informations.

Oval Flange Units - SSBSPFL Series



Unit No.	Shaft Dia. (inch / mm)	Dimensions (inch / mm)									Bolt Size	Bearing No.	Housing No.	Mass	
		d	H	J	A1	N	A	L	B	S				D min.	kg
SSBSPFL 201 201-8 202 202-10 203	12 mm 1/2 15 mm 5/8 17 mm	3-3/16 81	2-1/2 63.5	0.157 4	9/32 7.1	9/16 14	2-5/16 59	0.8661 22.0	0.236 6	1-59/64 49	1/4 M6	SSB 201 201-8 202 202-10 203	PFL 203 SS	0.1	0.2
SSBSPFL 204-12 204	3/4 20 mm	3-17/32 90	2-13/16 71.4	0.157 4	23/64 9	5/8 16	2-5/8 67	0.9843 25.0	0.276 7	2-13/64 56	5/16 M8	SSB 204-12 204	PFL 204 SS	0.2	0.4
SSBSPFL 205-14 205-15 205 205-16	7/8 15/16 25 mm 1	3-3/4 95	2-63/64 75.8	0.157 4	23/64 9	23/32 18	2-25/64 71	1.0630 27.0	0.295 7.5	2-23/64 60	5/16 M8	SSB 205-14 205-15 205 205-16	PFL 205 SS	0.3	0.7

Other sizes could be available upon request. Minimum quantity may apply.
Please refer to page 52 for setscrew maximum torque informations.