

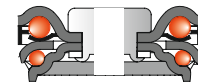
Institutional wheels

Series 67 /1/R



Institutional swivel castors with thermoplastic rubber wheels

Wheels series 85 with plain bearing (/1) or ball bearings with thread guards (/5/R FAD), see page 130.



Institutional swivel castor brackets with a load capacity of up to 110 kg

Housings made of pressed steel, zinc and chromated. Swivel head with double ball bearings and riveted kingpin. ALLSTOP total locking device on the trailing side of the housing, blocks rolling and swivel motion simultaneously.



Article code



mm



mm



mm



mm



mm



kg

67/050/18/1/R

50

18

71

10

25

40

67/075/25/1/R

75

25

98

10

30

60

67/100/32/1/R

100

32

135

12

38

90

67/125/32/1/R

125

32

160

12

41

110

67/150/32/1/R

150

32

185

12

36

110

67/050/18/5/R FAD

50

18

71

10

25

40

67/075/25/5/R FAD

75

25

98

10

30

60

67/100/32/5/R FAD

100

32

135

12

38

90

67/125/32/5/R FAD

125

32

160

12

41

110

67/150/32/5/R FAD

150

32

185

12

36

110

ALLSTOP total locking device
Code: 67 F/...R



Article code

Clamping range min
mm

Clamping range max
mm

69 K-R 17

16,9

17,8

69 K-R 20

19,0

21,5

69 K-R 22

21,5

24,0

69 K-R 24

24,0

27,0

69 K-R 28

27,0

30,0

69 K-R 32

31,0

35,0

69 K-V 17

16,6

18,7

69 K-V 22

21,5

24,0

69 K-V 25

24,0

27,0

69 K-V 27

27,0

30,0

69 K-V 32

32,0

35,0

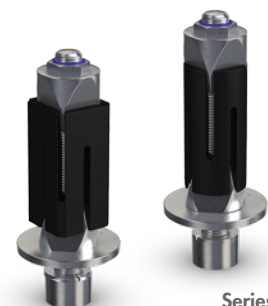
69 K-V 37

36,0

40,0

Fixing devices for institutional swivel castors with bolt hole fitting

Plastic expander for circular tubes (-R) or square tubes (-V).



Series 69 K