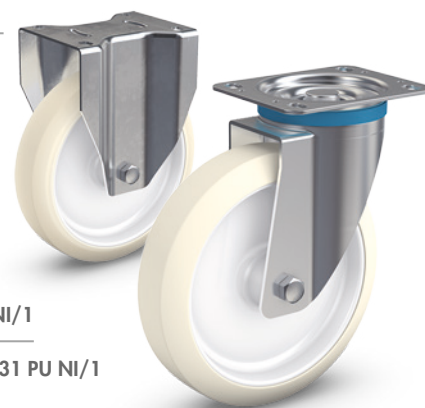


# PE·VO·THAN®

## stainless steel industrial castors



Series 32 PU NI/1

Series 31 PU NI/1

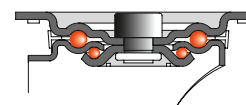
Article code	mm	mm	mm	mm	mm	mm	mm	kg
31 PU NI/080/35/1 L	80	35	108	105 x 85	80 x 60	9	38	100
31 PU NI/100/34/1 L	100	34	128	105 x 85	80 x 60	9	38	140
31 PU NI/125/37/1 L	125	37	155	105 x 85	80 x 60	9	45	180
31 PU NI/150/45/1	150	45	192	135 x 110	105 x 80	11	55	225
31 PU NI/160/50/1	160	50	197	135 x 110	105 x 80	11	55	250
31 PU NI/200/50/1	200	50	237	135 x 110	105 x 80	11	55	400

### Stainless steel industrial swivel castors with PEVOTHAN® wheels (plain bearing)

Wheels series 89 PU with plain bearing (/1), see page 51.

Article code	mm	mm	mm	mm	mm	mm	kg
32 PU NI/080/35/1 L	80	35	108	105 x 85	80 x 60	9	100
32 PU NI/100/34/1 L	100	34	128	105 x 85	80 x 60	9	140
32 PU NI/125/37/1 L	125	37	155	105 x 85	80 x 60	9	180
32 PU NI/150/45/1	150	45	192	135 x 110	105 x 80	11	225
32 PU NI/160/50/1	160	50	197	135 x 110	105 x 80	11	250
32 PU NI/200/50/1	200	50	237	135 x 110	105 x 80	11	400

### Stainless steel industrial fixed castors



### Industrial swivel castor brackets with a load capacity of up to 400 kg

Housings made of pressed stainless steel. Swivel head with double ball bearings, dust and splash proof, with riveted kingpin. ALLSTOP total locking device on the trailing side of the housing, blocks rolling and swivel motion simultaneously.

ALLSTOP total locking device  
Code: 31 F PU NI/...



single bolt hole  
Code: 31 PU NI/...R



single bolt hole/total lock  
Code: 31 F PU NI/...R



stem fitting  
Code: 31 Z PU NI/...



stem fitting/total locking device  
Code: 31 FZ PU NI/...



PEVOTHAN®  
PEVOTHAN®

Solid rubber  
wheels and castors

Electrically conductive  
wheels and castors

VULKOLAN® - PEVOTHAN®  
PEVOTHAN® / Soft

Stainless steel castors

Institutional  
wheels and castors

Conveyor/guiding  
rollers and ball units

Profile rollers

Pallet rollers

Press-on tyres