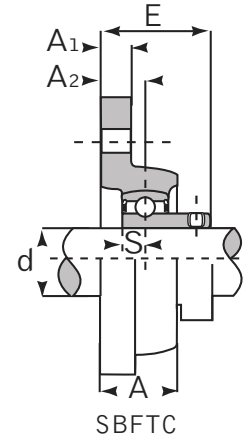
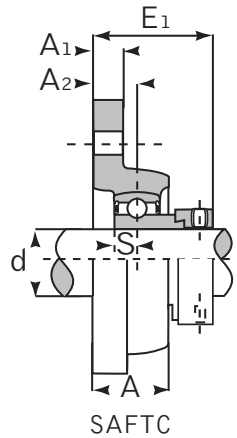
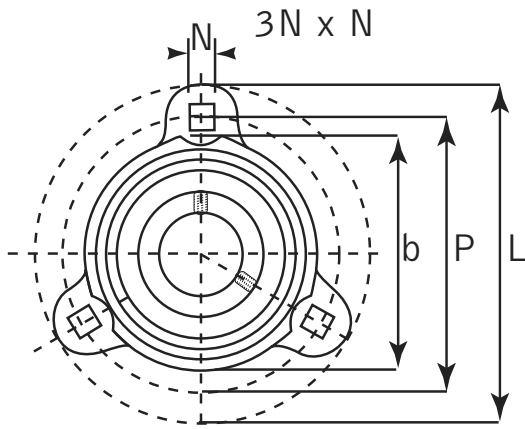




Malleable Ductile Flange Unit

Light Duty



SAFCT Eccentric Locking Collar SBFCT Set Screw Locking

Unit No. SAFCT SBFCT	Shaft Dia. (inch / mm)	Dimensions (inch / mm)							SAFCT		SBFCT		Bearing No. SA / SB	Housing No.	Weight		
		d	L	P	A	A1	A2	N	b	E1	S	E			S	kg	lbs
201 201-8	12 mm 1/2																
202 202-10	15 mm 5/8	3-3/16	2-1/2	45/64	13/32	3/8	9/32	2-3/32	1.2913	0.2559	1.0511	0.2362		FCT 203	0.26	0.57	
203 203-11	17 mm 11/16																
204 204-12	20 mm 3/4	3-9/16	2-13/16	25/32	7/16	7/16	11/32	2-13/16	1.3582	0.2952	1.1456	0.2755		FCT 204	0.37	0.81	
205 205-14	25 mm 7/8	3-3/4	3	25/32	1/2	7/16	11/32	2-13/16	1.3267	0.2952	1.1732	0.2952		FCT 205	0.48	1.06	
205-15 205-16	15/16 1																
206 206-18	30 mm 1-1/8	4-9/16	3-9/16	29/32	19/32	7/16	13/32	3	1.5236	0.3543	1.3385	0.3149		FCT 206	0.70	1.54	
206-19 206-20	1-3/16 1-1/4																
207 207-20	35 mm 1-1/4	4-13/16	3-15/16	61/64	19/32	1/2	13/32	3-15/32	1.6574	0.3740	1.4251	0.3346		FCT 207	0.91	2.00	
207-21 207-22 207-23	1-5/16 1-3/8 1-7/16																