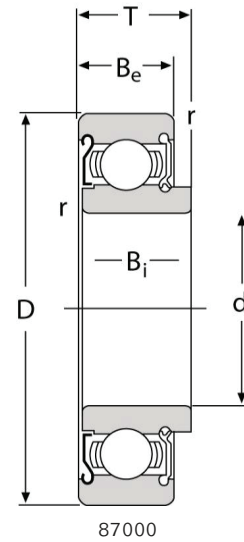
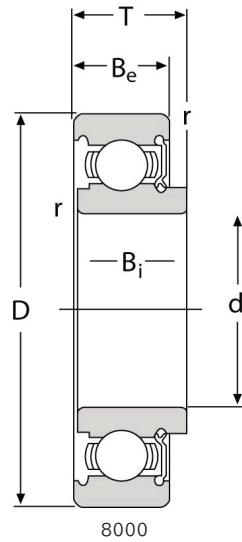
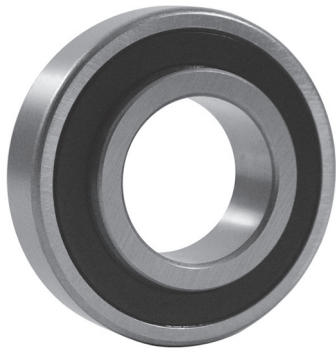




Ball Bearings

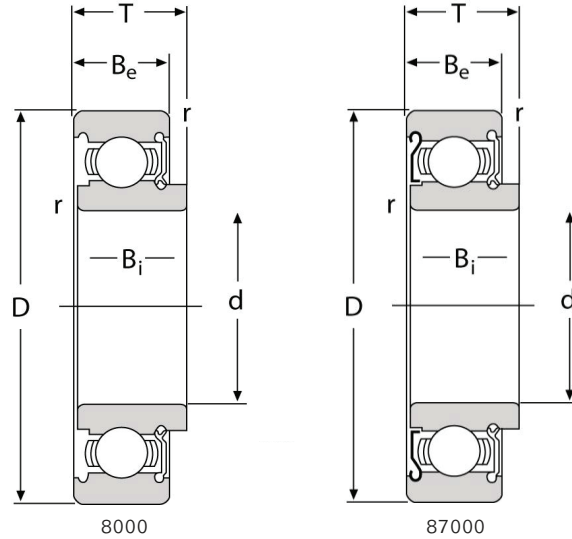


8000 - 87000

Unit No.		Bore (inch / mm)	Outer Diameter (inch / mm)	Width (inch / mm)			Radius (inch / mm)	Basic Load Rating (lbs)		Weight (lbs)
8000	87000	d	D	T	Be	Bi	r	Dynamic Cr	Static Cor	
8035	87035	0.1969 5	0.7480 19	0.4063 10.319	0.3150 8	0.3860 9.804	0.012 0.3	524	198	0.023
8036	87036	0.2362 6	0.7480 19	0.4063 10.319	0.3150 8	0.3860 9.804	0.012 0.3	524	198	0.025
8006	87006	0.2362 6	0.9449 24	0.4063 10.319	0.3150 8	0.3860 9.804	0.012 0.3	747	314	0.048
8037	87037	0.2756 7	0.8661 22	0.4063 10.319	0.3150 8	0.3860 9.804	0.012 0.3	740	306	0.039
8007	87007	0.2756 7	0.9449 24	0.4063 10.319	0.3150 8	0.3860 9.804	0.012 0.3	747	317	0.047
8038	87038	0.3150 8	0.8661 22	0.4063 10.319	0.3150 8	0.3860 9.804	0.012 0.3	740	306	0.038
8008	87008	0.3150 8	0.9449 24	0.4063 10.319	0.3150 8	0.3860 9.804	0.012 0.3	747	317	0.044
8039	87039	0.3543 9	1.0236 26	0.4063 10.319	0.3150 8	0.3860 9.804	0.025 0.6	1.025	438	0.053
8009	87009	0.3543 9	1.1811 30	0.5000 12.70	0.3543 9	0.4800 12.192	0.025 0.6	1.047	465	0.095
8500	87500	0.3937 10	1.1811 30	0.5000 12.70	0.3543 9	0.4800 12.192	0.025 0.6	1.047	465	0.077
8011	87011	0.4331 11	1.2598 32	0.5000 12.70	0.3937 10	0.4800 12.192	0.025 0.6	1.375	626	0.101
8501	87501	0.4724 12	1.2598 32	0.5000 12.70	0.3937 10	0.4800 12.192	0.025 0.6	1.375	626	0.097
8013	87013	0.5118 13	1.2598 32	0.5000 12.70	0.3937 10	0.4800 12.192	0.025 0.6	1.375	626	0.093
8014	87014	0.5512 14	1.3780 35	0.5000 12.70	0.4331 11	0.4800 12.192	0.025 0.6	1.525	747	0.115
8502	87502	0.5906 15	1.3780 35	0.5000 12.70	0.4331 11	0.4800 12.192	0.025 0.6	1.525	747	0.108
8016	87016	0.6299 16	1.3780 35	0.5000 12.70	0.4331 11	0.4800 12.192	0.025 0.6	1.525	747	0.105
8602	87602	0.5906 15	1.6535 42	0.5906 15.00	0.5118 13	0.5512 14	0.040 1.0	1.940	976	0.193



Ball Bearings



8000 - 87000

Unit No.		Bore (inch / mm)	Outer Diameter (inch / mm)	Width (inch / mm)			Radius (inch / mm)	Basic Load Rating (lbs)		Weight (lbs)
8000	87000	d	D	T	Be	Bi	r	Dynamic Cr	Static Cor	
8503	84503	0.6693 17	1.5748 40	0.5625 14.288	0.4724 12	0.5380 13.665	0.025 0.6	1.940	0.976	0.154
8603	87603	0.6693 17	1.8504 47	0.6299 16.00	0.5512 14	0.5906 15	0.040 1.0	2.885	1.494	0.257
8504	87504	0.7874 20	1.8504 47	0.6250 15.875	0.5512 14	0.6000 15.24	0.040 1.0	2.885	1.494	0.237
8604	87604	0.7874 20	2.0472 52	0.7480 19.00	0.5906 15	0.7078 18	0.040 1.0	3.150	1.785	0.352
8505	87505	0.9843 25	2.0472 52	0.6250 15.875	0.5906 15	0.6000 15.24	0.040 1.0	3.150	1.785	0.292
8605	87605	0.9843 25	2.4409 62	0.8268 21.00	0.6693 17	0.8268 21	0.040 1.0	3.150	1.785	0.600
8026	87026	1.0236 26	2.0472 52	0.6250 15.875	0.5906 15	0.6000 15.24	0.040 1.0	3.150	1.785	0.282
8506	87506	1.1811 30	2.4409 62	0.7480 19.00	0.6299 16	0.7480 19	0.040 1.0	1.970	1.140	0.506
8606	87606	1.1811 30	2.8346 72	0.9055 23.00	0.7480 19	0.9055 23	0.040 1.0	1.970	1.140	0.890
8507	87507	1.3780 35	2.8346 72	0.8268 21.00	0.6693 17	0.7874 20	0.040 1.0	2.120	1.330	0.708
8607	87607	1.3780 35	3.1496 80	0.9843 25.00	0.8268 21	0.9843 25	0.060 1.5	2.120	1.330	1.120
8508	87508	1.5748 40	3.1496 80	0.9449 24.00	0.8268 21	0.9449 24	0.040 1.0	2.960	1.820	1.070
8608	87608	1.5748 40	3.5433 90	1.0630 27.00	0.9055 23	1.0630 27	0.060 1.5	2.960	1.820	1.560
8509	87509	1.7717 45	3.3456 85	0.9449 24.00	0.8268 21	0.9449 24	0.040 1.0	3.300	2.050	1.200
8609	87609	1.7717 45	3.9370 100	1.1811 30.00	0.9843 25	1.1811 30	0.060 1.5	3.300	2.050	2.010
8510	87510	1.9685 50	3.5433 90	1.0236 26.00	0.8661 22	1.0236 26	0.040 1.0	3.560	2.350	1.300
8511	87511	2.1654 55	3.9370 100	1.0630 27.00	0.9055 23	1.0630 27	0.060 1.5	4.390	2.970	1.640
8512	87512	2.3622 60	4.3307 110	1.1420 29.00	0.9840 25	1.1420 29	0.060 1.5	5.900	3.070	2.110