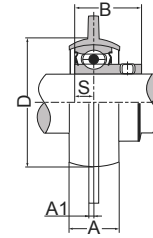
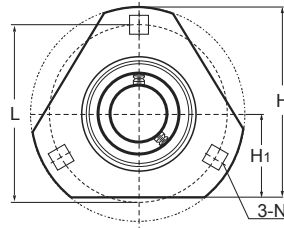
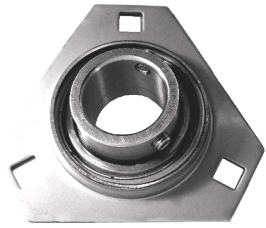


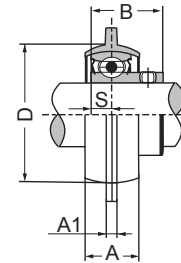
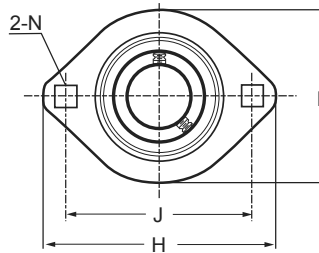
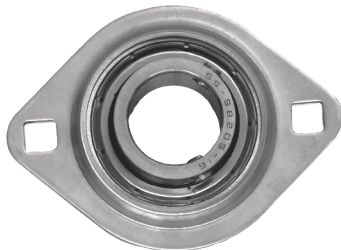
## Housing Flange Units - SSBSPFT Series



Unit No.	Shaft Dia. (inch / mm)	Dimensions (inch / mm)									Bolt Size	Bearing No.	Housing No.	Mass	
		d	H	L	H1	A	N	B	A1	S				D min.	kg
SSBSPFT 201 201-8 202 202-10 203	12 mm 1/2 15 mm 5/8 17 mm	2-23/32 <b>69.1</b>	2-1/2 <b>63.5</b>	0.079 <b>2.0</b>	9/16 <b>14.3</b>	9/32 <b>7.1</b>	1-1/8 <b>28.6</b>	0.866 <b>22.0</b>	0.236 <b>6.0</b>	1-15/16 <b>49.2</b>	1/4 M6	SSB 201 20-8 202 202-10 203	PFT 203 SS	2.2	0.5
SSBSPFT 204-12 204	3/4 20 mm	3 <b>76.2</b>	2-13/16 <b>71.4</b>	0.079 <b>2.0</b>	5/8 <b>16.0</b>	11/32 <b>9.0</b>	1-5/16 <b>33.3</b>	0.972 <b>27.4</b>	0.276 <b>7.0</b>	2-3/16 <b>56.0</b>	5/16 M8	SSB 204-12 204	PFT 204 SS	2.2	0.5
SSBSPFT 205-14 205-15 205 205-16	7/8 15/16 25 mm 1	3-1/8 <b>79.4</b>	3 <b>76.2</b>	0.079 <b>2.0</b>	11/16 <b>18.0</b>	11/32 <b>9.0</b>	1-3/8 <b>34.9</b>	1.063 <b>27.0</b>	0.295 <b>7.5</b>	2-3/8 <b>60.0</b>	5/16 M8	SSB 205-14 205-15 205 205-16	PFT 205 SS	3.6	0.8

Other sizes could be available upon request. Minimum quantity may apply.  
Please refer to page 52 for setscrew maximum torque informations.

## Oval Flange Units - SSBSPFL Series



Unit No.	Shaft Dia. (inch / mm)	Dimensions (inch / mm)									Bolt Size	Bearing No.	Housing No.	Mass	
		d	H	J	A1	N	A	L	B	S				D min.	kg
SSBSPFL 201 201-8 202 202-10 203	12 mm 1/2 15 mm 5/8 17 mm	3-3/16 <b>81</b>	2-1/2 <b>63.5</b>	0.157 <b>4</b>	9/32 <b>7.1</b>	9/16 <b>14</b>	2-5/16 <b>59</b>	0.8661 <b>22.0</b>	0.236 <b>6</b>	1-59/64 <b>49</b>	1/4 M6	SSB 201 201-8 202 202-10 203	PFL 203 SS	0.1	0.2
SSBSPFL 204-12 204	3/4 20 mm	3-17/32 <b>90</b>	2-13/16 <b>71.4</b>	0.157 <b>4</b>	23/64 <b>9</b>	5/8 <b>16</b>	2-5/8 <b>67</b>	0.9843 <b>25.0</b>	0.276 <b>7</b>	2-13/64 <b>56</b>	5/16 M8	SSB 204-12 204	PFL 204 SS	0.2	0.4
SSBSPFL 205-14 205-15 205 205-16	7/8 15/16 25 mm 1	3-3/4 <b>95</b>	2-63/64 <b>75.8</b>	0.157 <b>4</b>	23/64 <b>9</b>	23/32 <b>18</b>	2-25/64 <b>71</b>	1.0630 <b>27.0</b>	0.295 <b>7.5</b>	2-23/64 <b>60</b>	5/16 M8	SSB 205-14 205-15 205 205-16	PFL 205 SS	0.3	0.7

Other sizes could be available upon request. Minimum quantity may apply.  
Please refer to page 52 for setscrew maximum torque informations.